

Piling Equipment Specialists

Sales - Hire - Parts and Service - Project Support



In March of 2019 ABI Equipment Ltd supplied a range of ABI Mobilram equipment to contractors DWM Civil Engineering to carry out sheet piling works in Longsight, Manchester.

This work was part of the first phase of a two-phase redevelopment, which once completed will see a brand new superstore outlet almost double the size of the existing store.

Manchester Superstores operate their Longsight branch from premises on the busy A6 Stockport Road, and have acquired land adjacent to this in order to extend their current store. This first phase of works encompasses the clearing, excavation and construction works on the newly acquired site – and once completed the existing store will move into the new premises. The second phase of works will then see the current store demolished and a new building constructed in its place. The two new structures will then be joined to form one new superstore. The new 3 storey building will have also have basement storage.

Whilst the ground conditions were relatively straight forward there were other important factors to consider when planning to undertake sheet piling works at this site location: site access in a bustling commercial area; noise restrictions, and the potential for transmitted ground vibrations to nearby structures.

DWM selected one of our ABI TM 14/17 V Mobilrams due to its high manoeuvrability, compact size and piling versatility. Initially the rig was coupled with an MDBA 4500

Basement Construction : Longsight, Manchester

Client : DWM Civil Engineering

Equipment used :

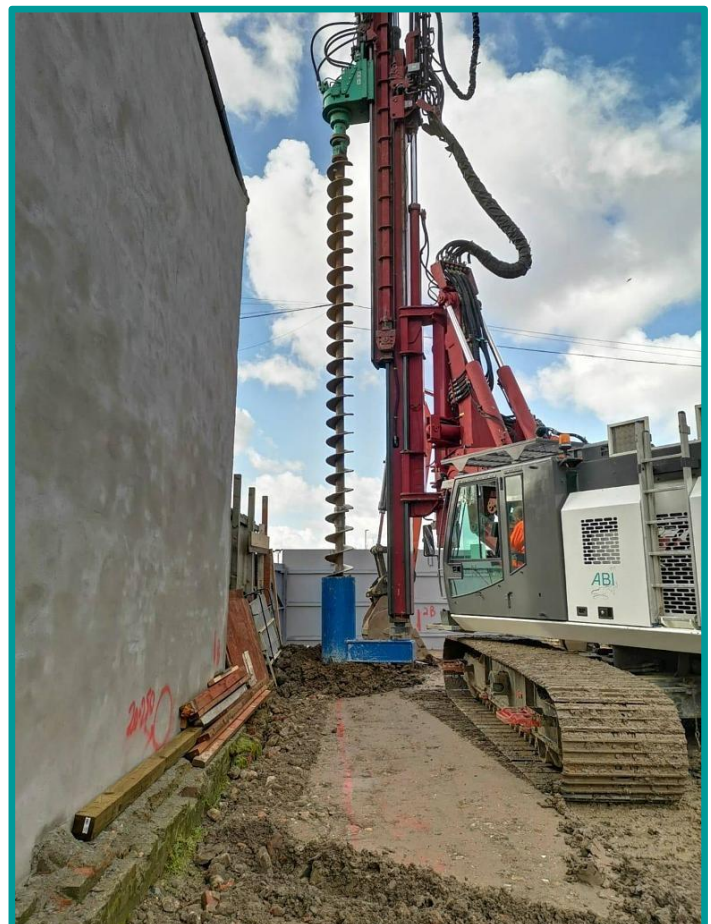
ABI Mobilram TM 14/17 V

MDBA 4500 Auger Drive

MRZV 20V Vibrator

HPU 600 Hydropress

Application : Sheet Piling

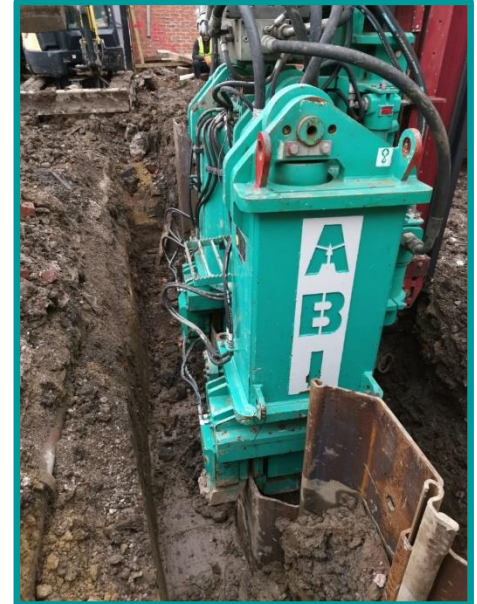


Piling Equipment Specialists

Sales - Hire - Parts and Service - Project Support



auger drive for pre-drilling the ground ahead of sheet piling works. The sheet piles were then installed using a combination of MRZV20V vibrator (in locations away from structures) and our HPU 600 Hydropress pile press to press the piles to their final depth without the use of vibration (in locations close to boundary walls or sensitive structures). This combination of equipment ensured that guidelines and restrictions regarding noise and vibration could be met, without compromising the speed or efficiency of the works. It is on projects such as this that the Mobilram system excels, with a range of piling attachments and techniques which can be rapidly interchanged as the soils or site circumstances vary around a jobsite. Changing attachments and tooling is a fast and efficient process.



This phase of the project saw the installation of L604 U-shaped sheet piles in a range of lengths between 6m and 9m around the perimeter of the acquired site. Following the completion of piling works DWM were able to install temporary internal props, and then the basement excavation could begin.



Scott Raffry, Operations Director, DWM Civil Engineering comments:

“The piling package is generally the first item of work we carry out for our clients’, it is important that we demonstrate our professionalism from the outset. We have to ensure the kit specified and used is correct for the project first time. We find using the Hydropress method over other forms of pressing system on certain projects can provide a better overall solution as the rigs versatility to accept the auger and press allow for a single item of plant to carry out the works.”