

# ABI Equipment Limited

## Piling Equipment Specialists

Sales - Hire - Parts and Service - Project Support



ABI Equipment Limited was asked to supply specialist equipment consisting of a Delmag RH34 drilling rig, with extended reach capability and drilling tools by piling sub-contractor Bachy Solentanche.

The piling works were carried out over a four month period between September and December 2017.

### Water Street Bridge, Canary Wharf

**Main Contractor:** Red7Marine

**Client:** Canary Wharf Contractors

**Piling Sub contractor:** Bachy Solentanche

**Piling Equipment supplier:** ABI Equipment Limited

### The Project

The Water Street Bridge project is part of the Canary Wharf Masterplan that involves the construction of a new district on the site of Wood Wharf. Designed by Allies and Morrison Architects the new district is expected to be completed in 2023 and will provide 3,300 new homes, almost 2 million sq ft of high quality office space and 380,000 sq ft of shops and restaurants, as well as leisure and community facilities.

Water Street Bridge will provide a road link between the new district and Montgomery Square.

### Project Features

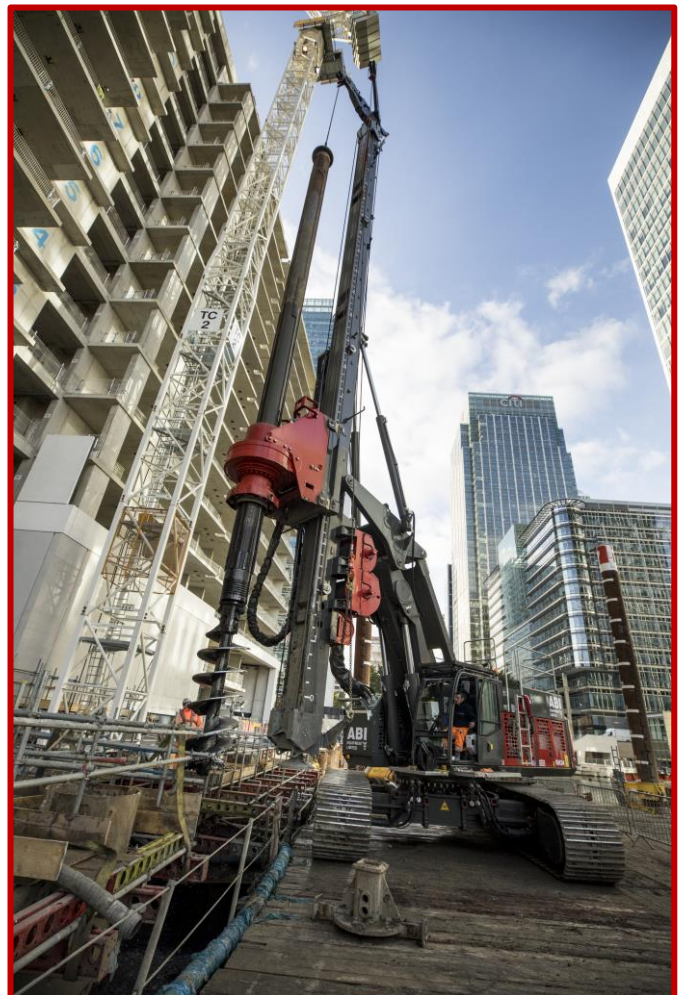
The Delmag RH34 was used to install the piles for the marine phase of the project.

The scheme required the installation of:

6no. 450mm landbased piles

52no. Ø900mm LDA marine piles

12no. Ø1200mm LDA marine piles



### ABI Equipment Limited

Barn Way, Lodge Farm Industrial Estate, Northampton NN5 7UW, UK

Tel: +44 (0) 1604 586960 - Fax: +44 (0) 1604 586961 - Email: [sales@abi-eqp.com](mailto:sales@abi-eqp.com) - [www.abi-eqp.com](http://www.abi-eqp.com)

# ABI Equipment Limited

## Piling Equipment Specialists

Sales - Hire - Parts and Service - Project Support

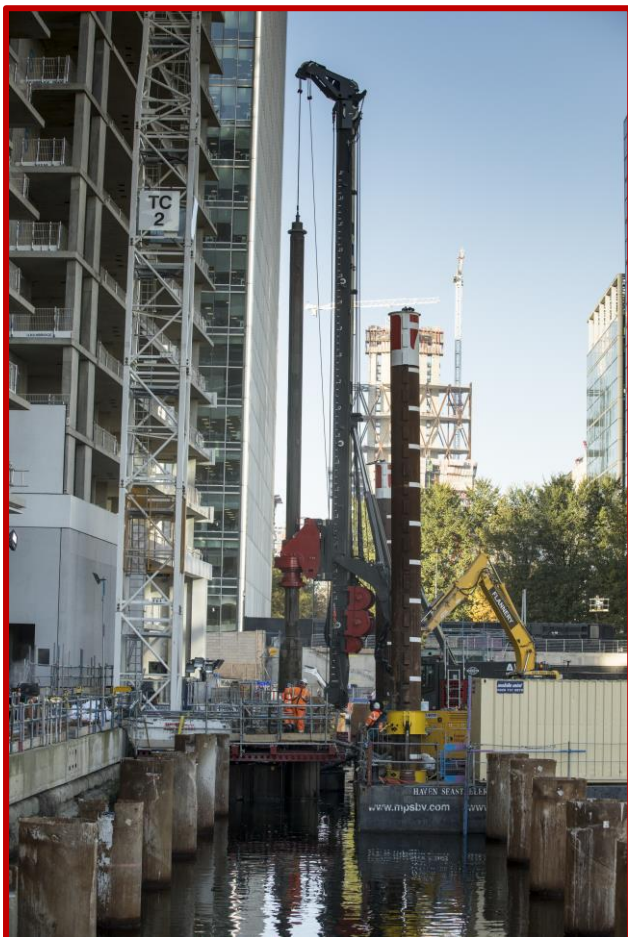


### Piling Method

In order to provide a stable platform for the marine piles to be installed it was necessary for the Delmag RH34 to be positioned on a 280 tonne jack-up barge.

The set up on the drilling rig included a special extendable reach which ensured that the piles on this challenging project were installed with the minimum of difficulty.

The piling process was as follows:



- Installation of Ø1200mm conductor casing into the river bed.
- Pumping of river water out of casing.
- Drilling out material to the required depth using the Ø900mm and Ø1200mm rotary tools.
- Lifting the steel piles into place.
- The piles being dug under polymer to depth of 29m and then tremied with concrete.

The prevailing ground conditions were river silt and gravel over London Clay, and the piles toed into Thanet Sand.

**Rob Gold**, Project Manager for Bachy Solentanche commented:

“We were very pleased with the way that the Delmag RH34 performed. The drilling rig was set up with an extended reach which was easy to use we were also impressed by the reliability of the rig. We were delighted with the service that we received from ABI Equipment Ltd.”

### ABI Equipment Limited

Barn Way, Lodge Farm Industrial Estate, Northampton NN5 7UW, UK

Tel: +44 (0) 1604 586960 - Fax: +44 (0) 1604 586961 - Email: [sales@abi-eqp.com](mailto:sales@abi-eqp.com) - [www.abi-eqp.com](http://www.abi-eqp.com)