

ABI Equipment Limited

Piling Equipment Specialists

Sales - Hire - Parts and Service - Project Support



ABI Equipment Limited was asked to supply specialist equipment consisting of a Delmag RH 28 drilling rig, rotary head and Kelly bar by piling contractor Piling Solutions Ltd for the piling work on the site at Great Scotland Yard, London.

The piling works were carried out over a number of weeks from March to July 2015.

In 1829, Great Scotland Yard was selected by the Home Secretary Sir Robert Peel as the headquarters of the newly founded Metropolitan Police force. It is where investigations into the likes of Jack the Ripper were centred and featured in the novels of Charles Dickens and Arthur Conan Doyle.

The site has been acquired on a 125 year lease by the Galliard Group who plan to turn the Grade 2 listed seven story building into one of London's top hotels.



Great Scotland Yard

Main Contractor: Bay Construct Ltd

Client: Gladstone Court Development Ltd

Piling Sub contractor: Piling Solutions

Equipment Supplier: ABI Equipment Limited



ABI Equipment Limited

Barn Way, Lodge Farm Industrial Estate, Northampton NN5 7UW, UK

Tel: +44 (0) 1604 586960 - Fax: +44 (0) 1604 586961 - Email: sales@abi-eqp.com - www.abi-eqp.com

ABI Equipment Limited

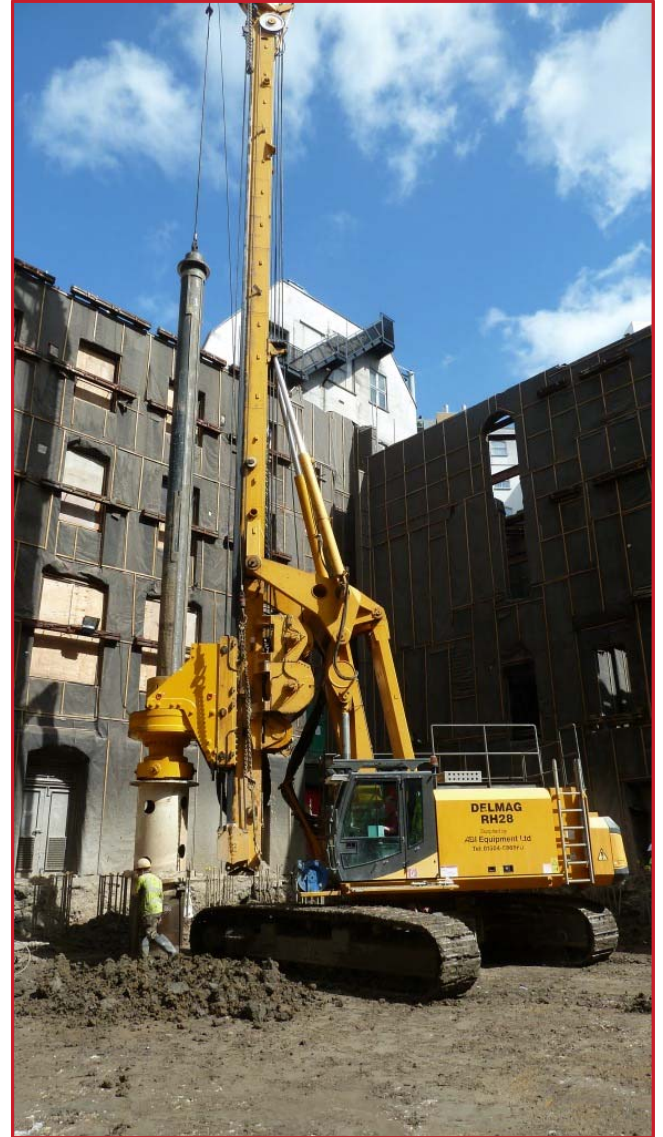
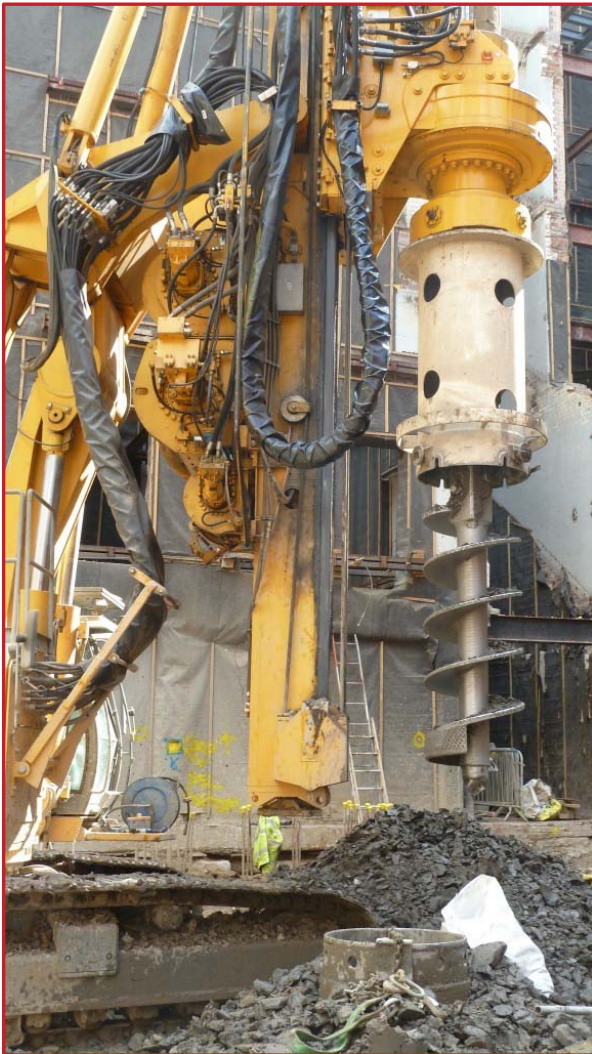
Piling Equipment Specialists

Sales - Hire - Parts and Service - Project Support



The new £100 million Great Scotland Yard hotel, which is expected to open in 2016, will feature a total of 235 rooms, a grand entrance foyer and other features expected of a top hotel.

ABI Equipment Limited supplied a Delmag RH28 Drilling Rig c/w rotary head and kelly bar on hire to Piling Solutions Ltd.



The Rig was used to construct a secant pile wall, consisting of 91 'hard' and 91 'soft' infill piles which were installed around the perimeter of the site. It was a very tight site where space was limited.

The piles were \varnothing 900 mm to a depth of 20 metres long. The ground consisted of made ground, soft silty sands and gravels and from 9 metres down firm clay.

ABI Equipment Limited

Barn Way, Lodge Farm Industrial Estate, Northampton NN5 7UW, UK

Tel: +44 (0) 1604 586960 - Fax: +44 (0) 1604 586961 - Email: sales@abi-eqp.com - www.abi-eqp.com